

What is the EIT?

The European Institute of Innovation and Technology (EIT) drives innovation in Europe by supporting entrepreneurs, innovators and students across Europe to turn their best ideas into reality.

How does the EIT work?



Trains a new generation of entrepreneurs

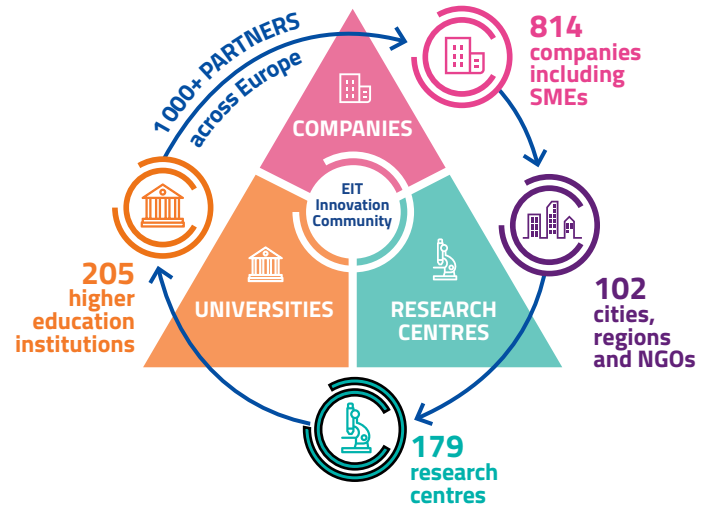


Develops innovative products and services



Supports start-ups & scale-ups

Europe's largest innovation community



EIT Climate-KIC

Working to accelerate the transition to a zero-carbon economy

EIT Digital

Driving Europe's digital transformation

EIT Food

Leading a global revolution in food innovation and production



EIT RawMaterials

Turning Europe's dependence on raw materials into a strategic strength

EIT InnoEnergy

Achieving a sustainable energy future for Europe

EIT Health

Giving EU citizens greater opportunities to enjoy a healthy life



The EIT is growing!

EIT Manufacturing

Strengthening and increasing the competitiveness of Europe's manufacturing industry

EIT Urban Mobility

Smart, green and integrated transport

Europe's one-stop shop for innovation



6 100+
Jobs created



890M+€
Investment raised by EIT ventures



1 250+
Ventures supported



600+
New products and services



1 700+
Graduates completing EIT programmes



40+
Innovation Hubs across Europe

The EIT's Innovation Communities create and find innovative solutions to major societal challenges